

The map displays a network of roads and public transport routes around Nishiyoshi Station. A prominent blue line connects six key locations:

- Point 1:** Near Nishiyoshi Station and the intersection of Route 41.
- Point 2:** Located near the intersection of Route 173 and Route 159.
- Point 3:** Situated near the intersection of Route 155 and Route 173.
- Point 4:** Located near the intersection of Route 173 and Route 155.
- Point 5:** Situated near the intersection of Route 173 and Route 159.
- Point 6:** Located near the intersection of Route 173 and Route 155.

Red arrows indicate specific travel directions between these points and other nearby areas like Hachioji and Maebashi. The map also shows major roads such as Route 41, Route 173, Route 155, and Route 159, along with local landmarks like Nishiyoshi Rinsai Park and Nishiyoshi Municipal Junior High School.

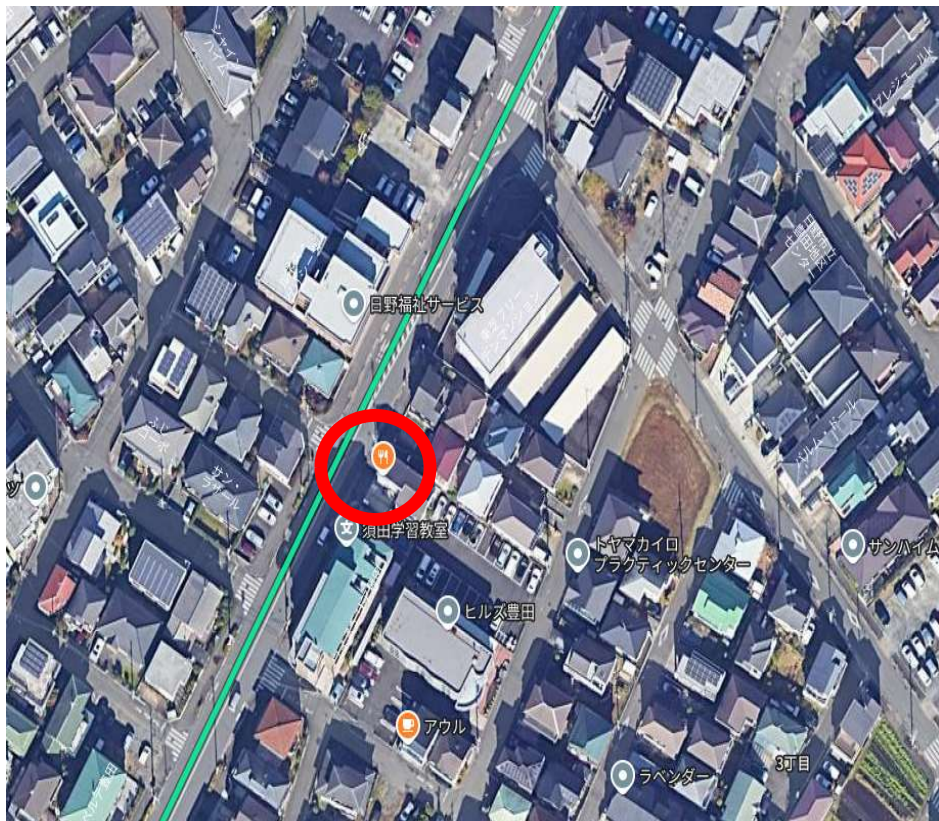
1, 観音院前



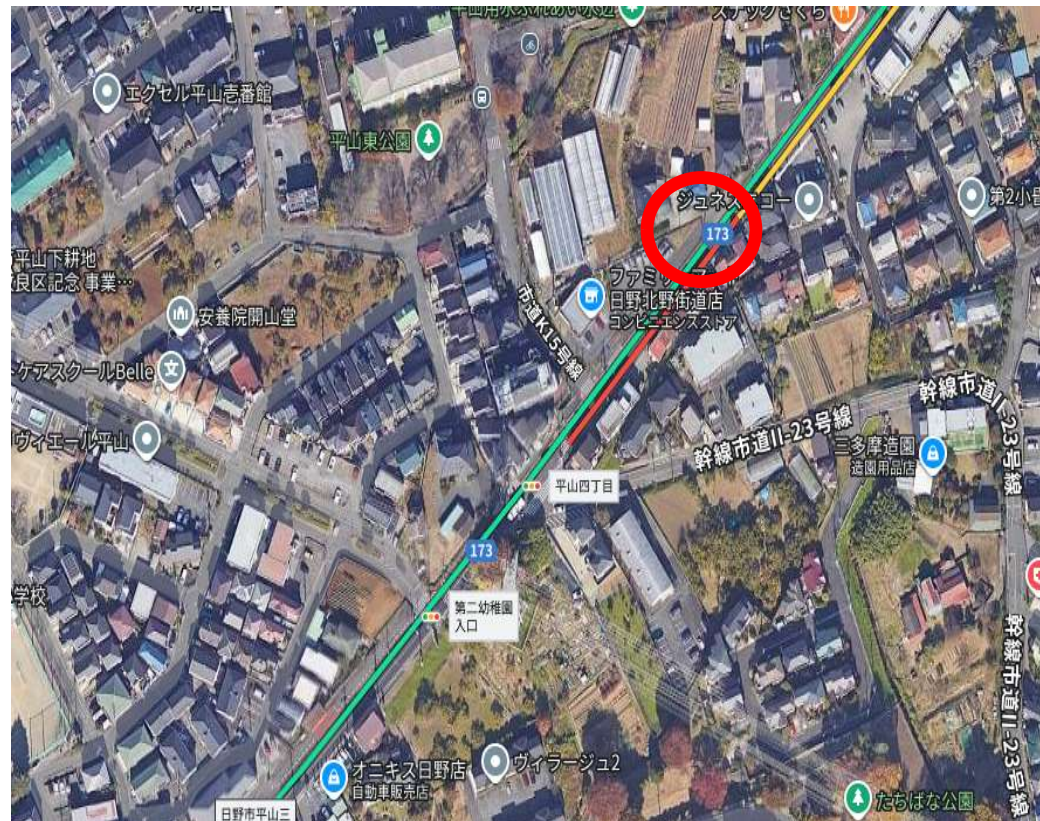
2, 豊田2丁目



3, 豊田3丁目



4, 豊田3丁目



5, ビッグエー向かい



6, 動物園裏門

